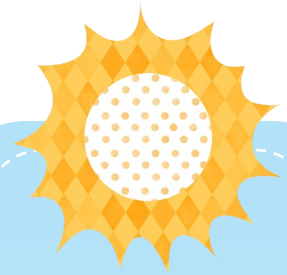




# Carrington Infant's Forest School Information for Parents



### Inside

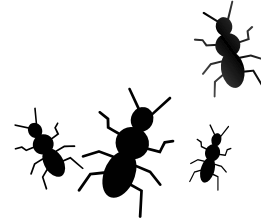
---

Ethos & Aims .....	2
Kit List, Safety & Leaders .....	3
Contact Information .....	4





Our key school values are **kindness, honesty and respect**. Forest school teaches and encourages our school values and much more.



---

*"The best classroom and the richest cupboard is roofed only by the sky." Margaret McMillan (C 1975)*

---

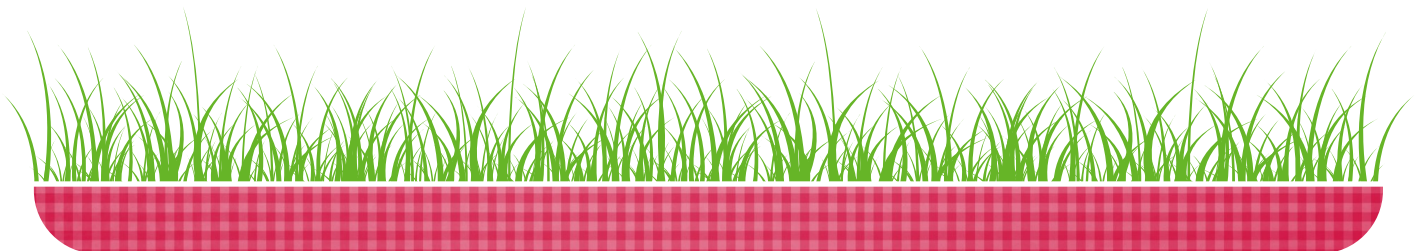
## Our Forest School Aims

For every child to regularly take part in child initiated activities in the school woodland. By playing and exploring to build their:

- Self esteem
- Confidence
- Language and Communication
- Appreciation of nature and the environment
- Independence
- Working as a team

## Site Information

We are sited in the grounds of Carrington Infant School allowing safe, secure use of the site, allowing the children to safely explore the trees, flowers and fauna.



## Our Forest School Leaders

We are Level 3 trained Forest School leaders with Forest School First Aid training. We have been trained to show children and other adults safe practice in:

- Lighting fires
- Cooking on fires
- Extinguishing fires
- Using tools safely and their use.
- Erecting shelters
- Knot tying
- Identification of trees, insects and fauna



## Kit List

Each child will need their own labelled clothes suitable for the weather conditions.

- Wellington Boots to remain at school.
- Waterproof jacket and trousers ( school uniform)
- Long sleeved t shirt navy blue
- Warm coat, hat and gloves

## Safety

Children are briefed before each session on:

- Boundaries of the site
- No Pick/No Pick Rule
- Reminded of plants which can be harmful
- To return immediately to base camp when asked.

### Meet the Team



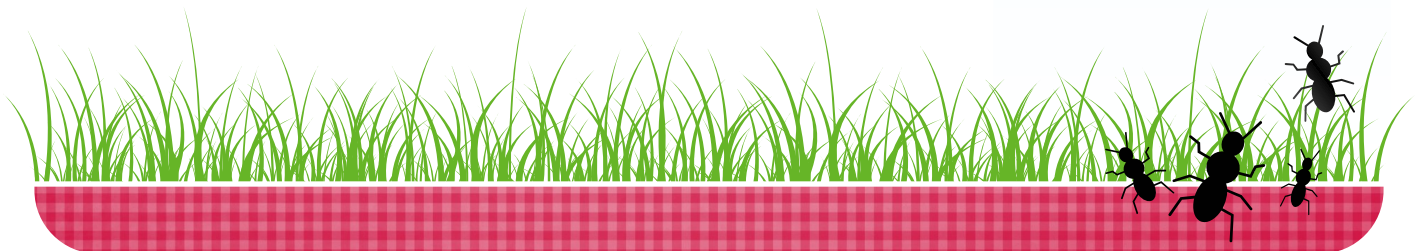
Mrs Booth



Mrs Barron



Mrs McIntyre





Carrington Infant School,  
2 Chapel Road,  
Flackwell Heath,  
High Wycombe,  
Buckinghamshire,  
HP10 9AA  
01628 523356  
[office@carrington-inf.bucks.sch.uk](mailto:office@carrington-inf.bucks.sch.uk)

